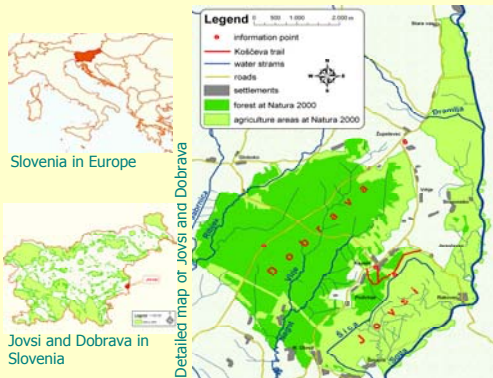




Jovsi – the cultural landscape and a sanctuary of endangered species

M. Galičič, PhD, and A. Hudoklin - Institute of the Republic of Slovenia for Nature Conservation, Dunajska 22, SI-1000 Ljubljana

Jovsi and Dobrava Natura 2000 site – the unique pearls of nature where mighty oaks are rustling all year long and Corn Crakes are singing in the summer time.



The site lies in the south-eastern part of Slovenia. The 2,900 hectares of wetland is the core area of exceptionally well preserved nature.

Jovsi, an open terrain of wet meadows with a mosaic of scrub and trees, is one of the most attractive and unique cultural landscapes of this type in the Sava river Basin.

Dobrava is one of the rare surviving stands of lowland oak forest with grassland margins.

The area's nature diversity

Frequent floods and high groundwater level lead to prevailing extensive agriculture use, such as late mowing in July or August. Biodiversity rich meadows host numerous endangered plant and animal species.

The greatest wealth of Jovsi are birds. Here dwells the only major Corn Crake population in the Pannonian part of Slovenia. The number of singing males oscillates between 20 and 25 (about 5% of the Slovene population). Jovsi is also one of the rare nest-sites of the Lesser Grey Shrike (*Lanius minor*) in Slovenia. The area is also inhabited by numerous Quail (*Coturnix coturnix*) and Sedge Warbler (*Acrocephalus schoenobaenus*).

The Šica stream is a spawning place for several amphibians. The most important are the Alpine Crested Newt (*Triturus carnifex*), Fire-bellied Toad (*Bombina orientalis*) and Moor Frog (*Rana arvalis*). The banks host Large Copper Butterfly (*Lycaena dispar*) and Jersey Tiger Moth (*Callimorpha quadripunctaria*). Among 132 plants, some rare species can also be found in the area, like Adder's Tongue (*Ophioglossum vulgatum*).



Preserving the cultural landscape and the habitat of endangered plant and animal species

project actions



Bird-watching tower

Threats
Land abandonment and overgrowing, intensification of agriculture (where farming is still present and/or possible), intensive forestry practices, disturbance due to increased human access, and low public awareness.

project actions



Informing of local inhabitants, farmers and landowners

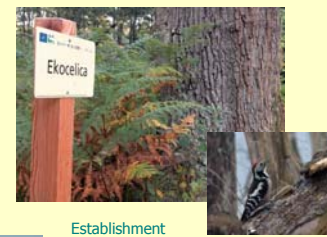


Information centre in Kapele Village

project actions

LIFE Project
With the LIFE project we addressed the listed threats by a number of project actions which mainly have already been successfully completed.

project actions



Establishment of the ecorell-network for the Middle Spotted Woodpecker in Dobrava forest

Middle Spotted Woodpecker

project actions



Traditional pruning of White Willow trees



Improvement of hydrological conditions along the Šica stream



Maintenance of wet meadows (mowing after 15th July on 100 ha and cleaning of 65 ha of overgrown meadows)

Jovsi - one of the most beautiful landscapes in Slovenia attained its beauty due to the hundreds of years of coexistence of people with nature. We want to keep it for future generations.