

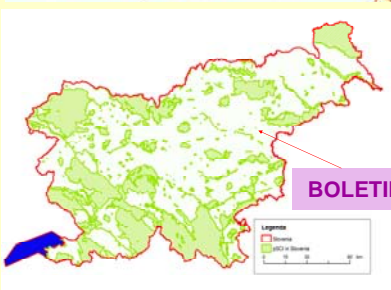
A restoration of a favourable Pasque flower (*Pulsatilla grandis*) habitat and a solution for its long-term management

G. Kalan and T. Košar, Institute of the Republic of Slovenia for Nature Conservation, Dunajska 22, SI-1000 Ljubljana

Boletina is a Natura 2000 site in the central-eastern part of Slovenia. It is one of the five pilot project sites of the project LIFE04NAT/SI/000240 (2005 -2007). Different project actions aimed at restoring and keeping a favourable site conservation state and a site management plan were worked out during the course of project.



SLOVENIA



BOLETINA



Legend
 pSCI Boletina
 information board
 fence
 0 12.5 25 50 m
 Kartografska podjetje, Javni podatki Slovenije, GURS, DOF 5, 1999
 Karti izdelal ZRSVN, september 2007



- Boletina site area: two hectares
- the number of *Pulsatilla grandis* plants: cca. 1200
- the most south-western edge of the European *Pulsatilla grandis* distribution
- the site is also a nature monument
- every year the site is visited by cca. 2000 visitors during the blooming season
- the site is a pilot LIFE project site (as a typical example of a small, non-complex site)

- *Pulsatilla grandis* and semi-natural dry grassland and scrubland - facies on calcareous substrates are the qualification species and habitat type of Natura 2000 site at Boletina
- this meadow represents the biggest population of *Pulsatilla grandis* in Slovenia
- *Pulsatilla grandis* appears very rarely and there are only four sites altogether in Slovenia, Boletina is the largest of them.

- Threats:**
- Land abandonment and partial bush overgrowth
 - Intensification of nearby agriculture
 - Human access disturbance

LIFE project activities

- Local partners and stakeholders:**
- Municipality of Šentjur
 - Local tourist office Ponikva
 - Local students, farmers, other residents...



Land buying → one owner



Mowing the grassland (every year in late summer)



Bushes removal



Educational programme (local residents including pupils)



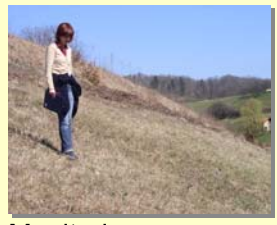
Public awareness campaign



Management plan



Supervision during the blooming season



Monitoring - counting plants

Conservation contract landowner ↔ government

- habitat maintaining (mowing, bushes cutting, soil manuring limitation)
- tourism at the site (infrastructure maintenance, guidance during the blooming season)
- supervision and support



Fencing the habitat